



RDL[®]
Radio Design Labs

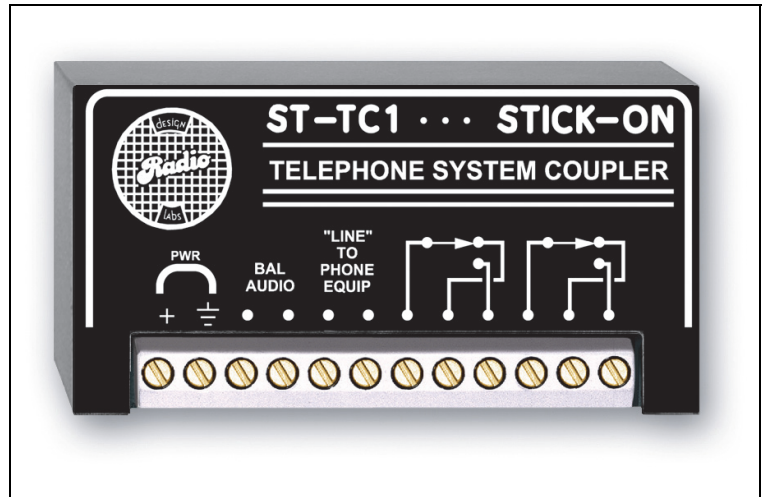
SPECIALISTS IN PRACTICAL PRECISION ENGINEERING™

STICK-ON[®] SERIES

Model ST-TC1

Telephone System Coupler

- To Simulate a Telco CO Line
- To Add Radio Control or Paging to KSU
- Contact Closure when Line is Selected
- Audio Input / Output from Telephone Switching Unit



The ST-TC1 is part of a group of products in the STICK-ON series from Radio Design Labs. The durable adhesives provided with the ST-TC1 permit permanent or removable mounting. Numerous available mounting accessories, brackets and rack-mount chassis are optionally available to facilitate any system design. STICK-ONs are designed, built and rated for continuous duty in professional A/V systems.

APPLICATION: The ST-TC1 is primarily intended to connect to an on-site telephone system switching (KSU). Connections from the ST-TC1 go into the KSU as if the ST-TC1 was an incoming phone line.

When the KSU seizes the line to the ST-TC1, a relay contact closure is provided which can be used to control a variety of equipment, such as a paging system or radio system. The closure is maintained as long as the line is seized. A 600 Ω transformer-isolated audio feed is available for audio to or from the telephone switching unit. The ST-TC1 will pass DTMF audio from a telephone keypad or other DTMF generating device.

The ST-TC1 may be utilized to add paging zones or a radio system interface to a telephone system. When any instrument in the telephone system picks up the line associated with the ST-TC1, the relay closes to activate the radio or paging function, and the audio spoken into the handset appears at the BAL-AUDIO terminals. The ST-TC1 can not be connected to a phone line that has ringer voltage present.

The ST-TC1 can be used in conjunction with RDL's ST-VOX1 modules to provide two-way communication. The ST-VOX1 will provide the necessary push-to-talk function to key the two-way communications systems.



STICK-ON[®] SERIES

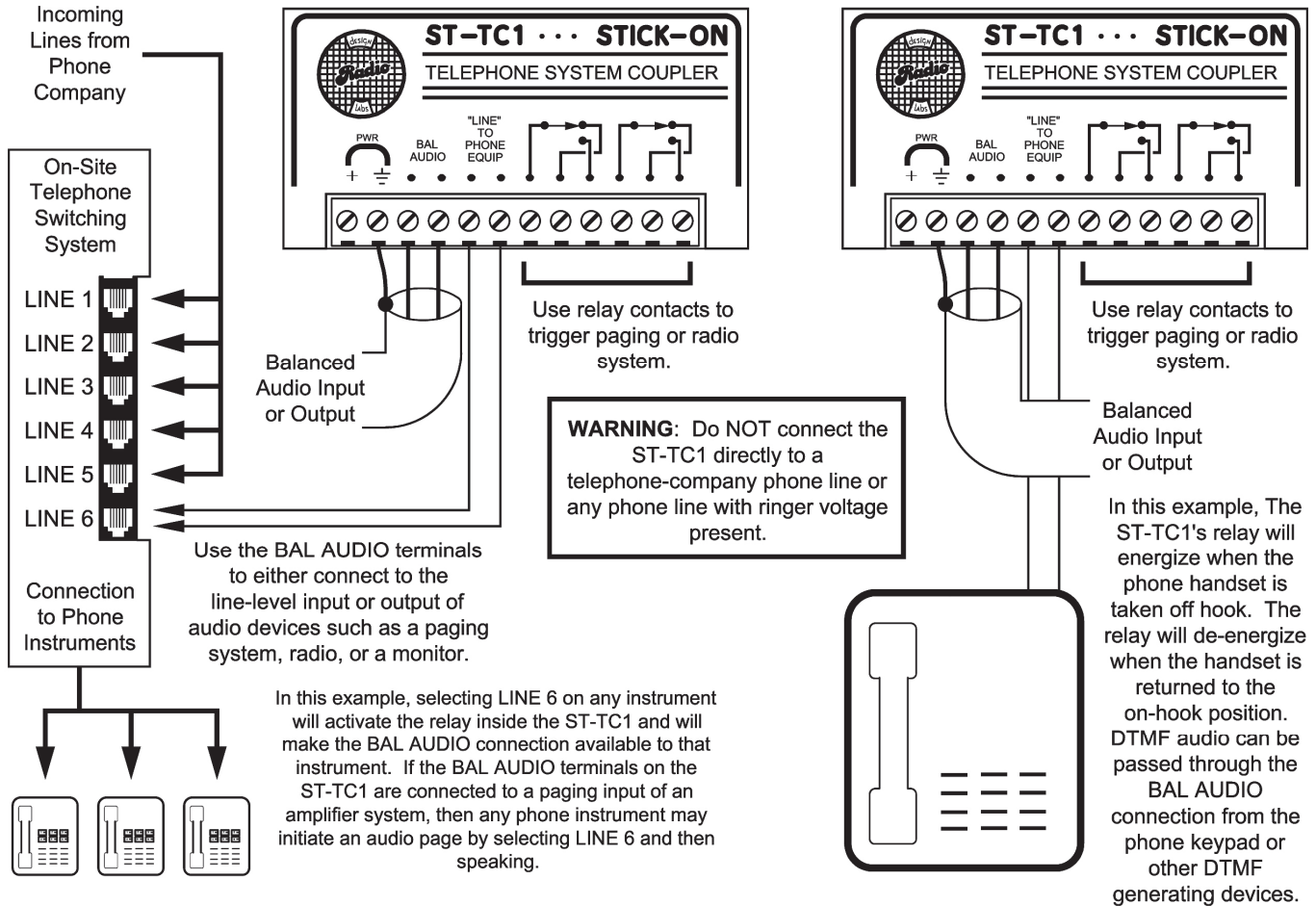
Model ST-TC1

Telephone System Coupler

Installation/Operation



Declaration of Conformity available from rdlnet.com.
Sole EMC specifications provided on product package.
Specifications are subject to change without notice.



TYPICAL PERFORMANCE

Line Connection:	Simulated telco central office line to feed telephone system.
Audio In/Out Impedance:	600 Ω balanced
Switching Contacts:	Double-Pole, Double-Throw
Maximum Switching Power:	60 W (220 Vdc, 125 Vac, 2 A)
Ambient Operating Environment:	0° C to 55° C
Power Requirement:	GROUND-REFERENCED, 24 Vdc @ 50 mA
Dimensions:	Height: 1.55 in 3.94 cm Width: 3.00 in 7.62 cm Depth: 0.65 in 1.65 cm

Note: Do not connect ST-TC1 directly to a telephone-company phone line, or any phone line that has ringer voltage present.