

Quick Start Guide

AP Series DIN-Rail Industrial Power Supply



Unpack the Power Supply and Check Contents

Part Number	Voltage	Wattage	Type
AP10010	24V DC	48W	Non-PoE
AP30010	48V DC	120W	PoE
AP30020	48V DC	240W	PoE



Power Cord

Documentation - *Quick Start Guide*
(this document)

Warning and Cautionary Messages

Warning: Disconnect system from supply voltage before commencing any installation, maintenance or modification work.

Risk of electric shock: All failure should be examined by a qualified technician. Do not remove the case of the DIN Rail power supply by yourself.

Risk of electric arcs and electric shock: connecting the primary and secondary sides together is not allowed.

Risk of burn: Do not touch the unit in operation or shortly after disconnection.

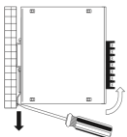
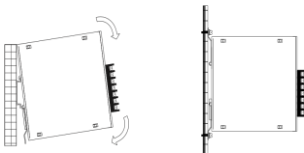
Risk of fire and short circuit: The unit must be protected from foreign objects and dripping liquids.

Warning: Only install the unit in a pollution degree 2 environment.

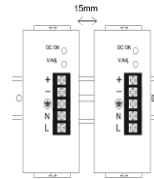
Warning: Maximum surrounding air temperature is 60°C (70°C for AP10010) and maximum humidity is 95% RH, Non-condensing.

Mount the Power Supply

- 1 Snap the power supply on TS35 DIN-Rail as shown in the figure below until the locking mechanism clicks. Shake the unit lightly to check locking action. Pull down bottom mounting bracket using a screw driver to remove unit.




- 2 The left housing of the power supply is designed as a heatsink. Keep 15mm minimum clearance for heat dissipation




- 3 The power supply utilizes convection cooling. Allow good ventilation clearances and do not cover the top and bottom of the unit.

Installation Instructions

- 1 Make sure power cord is not connected to AC source until completing wire connections on the power supply.
- 2 Use copper wires that are rated for the power supply output current and can withstand temperatures of at least 80°C such as UL1007 to connect the output terminal screws to the powered devices.
- 3 Connect the provided power cord to the power supply input terminal screws. The  must be connected to Protective Earth
- 4 Make sure that all strands enter the terminal connection and the screw terminals are securely fixed to prevent poor contact. The connector can withstand 8 lb-in torque.
- 5 Output voltage adjustable range is +/- 10% of rated voltage. Adjustment of more than 10% above rated voltage might cause over voltage protection and adjustment of more than 10% below rated voltage might cause output flicking at lower load.

Terminal Description

Terminal	Description
L	AC Input Line
N	AC Input Neutral
	Earth
+	Output Positive
-	Output Negative
NC	No Connection