

Low Cost High Performance Superflexible Balanced Microphone Cable

A specially developed high performance yet economical series of low impedance balanced microphone cables. These cables are small in size and special rubber - like PVC jacket is extremely flexible and exhibits good resistance to rough handling and abrasion.

High grade insulation material is designed to minimize heat shrinkage during soldering which allows easy termination to XLR type connectors. Available in both overall and individually shielded types.

Part No. W2552 & W2582



Superflexible Light Weight Mic. Cables With Overall Shield

Here is an extremely limp and flexible cable for all types of audio/visual and industrial audio applications. XLPE insulation and a strong rubber - like outer jacket makes this cable ideal where a durable yet economical cable is needed.

Part No.	W2552	W2582
O.D. (mm)	5.0 \emptyset (0.197")	6.0 \emptyset (0.236")
Flex Life	11,000 cycles	13,800 cycles
Tensile Strength	421 N	441 N
Colors	Black	Black / Red / Yellow / Green / Blue / Gray

Part No. W2447 & W2435



Superflexible Light Weight Mic. Cables With Individual Shield

A durable and mechanically strong cable similar to W2552 but with two separately served shields. This produces capacitance level a little higher than that of W2552.

Part No.	W2447	W2435
O.D. (mm)	5.0 \emptyset (0.197")	6.0 \emptyset (0.236")
Flex Life	14,000 cycles	24,000 cycles
Tensile Strength	451 N	451 N
Colors	Black	Black

Part No. W2792

[Back To Top](#)



Low MicrophonicS Mic. Cable With Conductive PVC

Conductive material is coated on top of the XLPE insulation which reduces microphonic handling noise to negligible level even in high impedance applications. Before soldering the black coating shall be stripped back.

Part No.	W2792
O.D. (mm)	6.0ø (0.236")
Flex Life	22,000 cycles
Tensile Strength	490 N
Colors	Black / Red / Yellow / Green / Blue / Gray

SPECIFICATIONS

Configuration						
Part No.	W2552	W2582	W2447	W2435	W2792	
No. of Conductor	2					
Conductor	Details	12/0.12 A <T250D*3>				
	Size(mm²)	0.135mm² (#26 AWG)				
Insulation	Ov. Dia.(mm)	1.5Ø (0.059")				
	Material	LNXLPE (Low Noise Cross-Linked Polyethylene)				
	Colors	Red / Clear				
Served Shield	Approx. 67/0.12A		Approx. 36/0.12A		Approx. 95/0.12A	
Jacket	Ov. Dia.(mm)	5.0Ø (0.197")	6.0i (0.236")	5.0Ø (0.197")	6.0i (0.236")	6.0i (0.236")
	Material	Flexible PVC				
	Colors	Black	Black / Red / Yellow / Green / Blue / Gray	Black	Black	Black / Red / Yellow / Green / Blue / Gray
Roll Sizes	50m (164 Ft) 100m (328Ft) 200m (656Ft)	50m (164 Ft) 100m (328Ft) 200m (656Ft)	100m (328Ft) 200m (656Ft)	100m (328Ft) 200m (656Ft)	50m (164 Ft) 100m (328Ft) 200m (656Ft)	
Weight per 200m Roll	7.5kg	9kg	7.7kg	9kg	8.8kg	

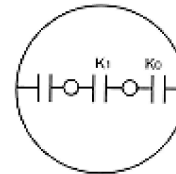
ELECTRICAL & MECHANICAL CHARACTERISTICS

[Back To Top](#)

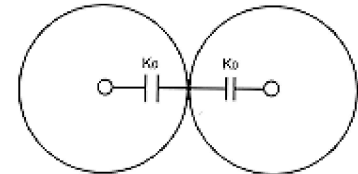
Part No.		W2552	W2582	W2447	W2435	W2792
DC Resistance at 20°C	Inner Cond.	0.14W/m(0.043W/Ft)				
	Shield	0.024Ω/m(0.007Ω/Ft)		0.021Ω/m(0.006Ω/Ft)		0.018Ω/m(0.005Ω/Ft)
Capacitance at 1kHz, 20°C (Partial C. Value) See below figure*	K ₀	90pF/m(27pF/Ft)		123pF/m(37.5pF/Ft)		127pF/m(38.7pF/Ft)
	K ₁	10pF/m(3pF/Ft)		-		
Inductance between conductors at 1kHz, 20°C		0.8μH/m(0.24μH/Ft)				
Electrostatic Noise**		50mV Max.		50mV Max.		0.5mV Max.
Electromagnetic Noise**		0.15mV Max.				
Microphonics at 50KW Load**		30mV Max.	30mV Max.	30mV Max.	30mV Max.	1mV Max.
Voltage Breakdown		Must withstand at DC 500V/15sec.				
Insulation Resistance		100000 MW × m Min. at DC 125V, 20°C				
Flex Life**		11,000 cycles	13,800 cycles	14,000 cycles	24,000 cycles	22,000 cycles
Tensile Strength		421N	441N	451N	480N	490N
Emigration		Non-emigrant to ABS				
Applicable Temperature		-20°C ~ +70°C(-4°F ~ +158°F)				

** Using standard testing methods of Mogami Wire & Cable Corp.

* Partial Capacitance



W2552/W2582



W2447/W2435/W2792

[Back To Top](#)